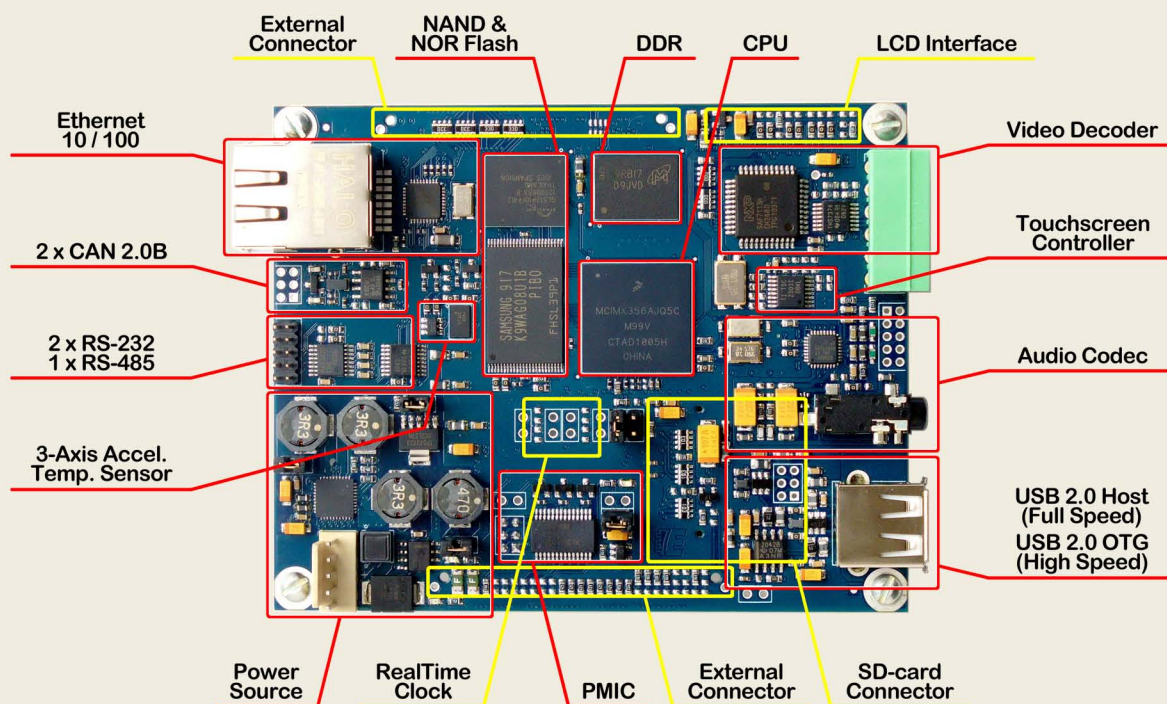


ElmiCORE-i.MX35-Lite multimedia processing board based on Freescale i.MX35 (ARM11, 532 MHz)



Technical characteristics

- ▶ CPU Freescale i.MX35
 - ARM1136JF-S, 532 MHz, 32-bit
 - Floating point coprocessor unit
 - Graphic processing unit OpenVG 1.1
- ▶ On-board memory
 - 128kB internal SRAM
 - up to 128MB NOR Flash
 - up to 256MB mDDR SDRAM
- ▶ Analog and digital IO
 - Audio : Line In/Out, MIC, Headphones
 - Video-In : PAL/SECAM/NTSC, 25fps/4, 4 x CVBS or 2 x S-video, input filter
 - Temperature sensor ($\pm 1^{\circ}\text{C}$)
 - 3-Axis Accelerometer ($-8g \div +8g$)
- ▶ Serial interfaces
 - 2 x RS-232, 1 x RS-485
 - USB 2.0 FS Host, USB 2.0 HS OTG
 - 2 x I²C, 2 x SPI, 1 x SSI, 2 x CAN 2.0B
 - Ethernet 10/100Base-T (with Auto-MDIX)
- ▶ Peripheral devices
 - SD/MMC/RS-MMC/MMCplus card slot
 - Real Time Clock (RTC) with NV RAM
 - TFT LCD interface (FPC connector) with 4-wire resistive touchscreen controller
 - External connectors (2 x 100 pin)
- ▶ Mechanical characteristics
 - Weight : less than 100 g.
 - Dimensions : 100 x 80 x 15 mm.